



## Documentation & Support

### Mobile for Enterprise Users

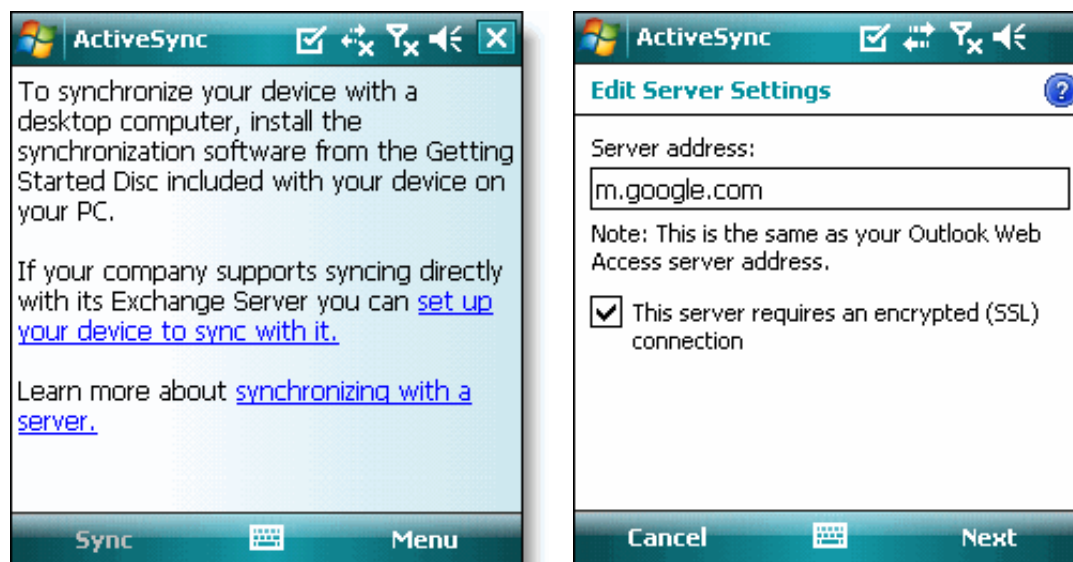
## Set up Google Sync with your Windows Phone

Starting Jan. 30, 2013, only Google Apps for Business, Education, and Government customers can set up new devices with Google Sync. [Learn more.](#)

### Getting started

Before setting up Google Sync on your Windows Phone or Windows Mobile device, back up your Contacts and Calendars from your phone on your computer before proceeding.

1. Open the Microsoft Exchange **ActiveSync** application on your device's home screen.
2. Press **Set up your device to sync with it.**
3. Enter **m.google.com** as the server address.
4. Ensure that the **SSL** option is selected.

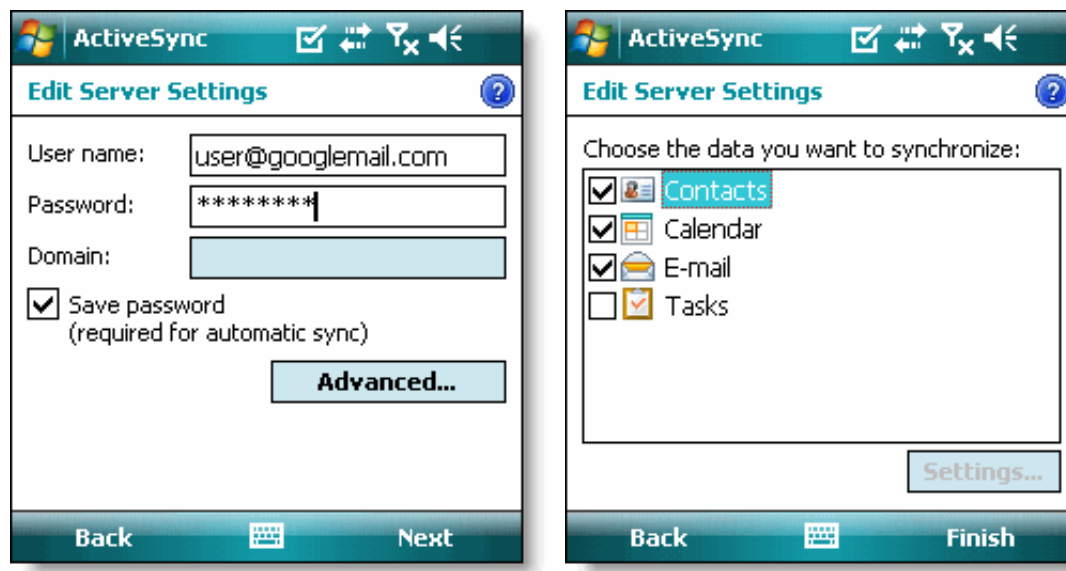


### Sign in to your Google account

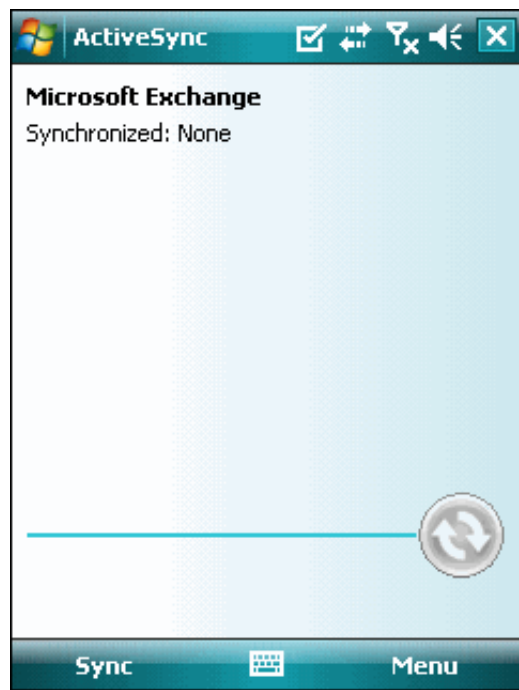
5. Press **Next.**
6. Enter your full Google Account email address in the **User name** field.
7. Enter your Google Account password in the **Password** field. If you're a [2-step verification user](#), please use an [application-specific password](#) instead.
8. Leave the **Domain** field empty. If your device requires you to enter a domain name, enter **google**.
9. Press **Next.**
10. Check **Contacts**, **Calendar**, or **Email**, depending on which you'd like to sync. (Tasks is not supported and

will lead to an error if checked.)

11. Press **Finish**.



12. Press the **Sync** softkey on the left to synchronize.



You've now set up Google Sync for your Windows Mobile device.

**Tip:** If your business, school, or organization uses Google Apps, your administrator will first need to [enable Exchange ActiveSync](#) before you can take advantage of this feature.

Set up the "Send Mail As" feature

- ▶ [Enable the "Send Mail As" feature](#)

▶ ["Send Mail As" Frequently Asked Questions](#)

## Delete Email

▶ [Enable "Delete Email As Trash" for this device](#)

87

---

## Related

### [Gmail Help forum](#)

Discuss topics with Google Guides

### [Calendar help forum](#)

Discuss topics with Google Guides

### [Apps administration](#)

Get help managing your Google Apps domain

---

Google Apps

Help for other Google products

Change language:  ▼

©2013 Google

[Privacy Policy](#)

[Terms of Service](#)